



# DamagePlus™ SOFTWARE

With a technical basis in API RP 571 and WRC 489, DamagePlus™ software is a quick reference guide for identifying and understanding the potential damage mechanisms that can cause costly fixed equipment failure. Many improvements have been made to the software, which includes the new version of API 579.

## SOLVER

Select filter criteria to view possible Damage Mechanisms. Select a mechanism to display API 571 section and sample pictures for that mechanism.

## DAMAGE MECHANISMS

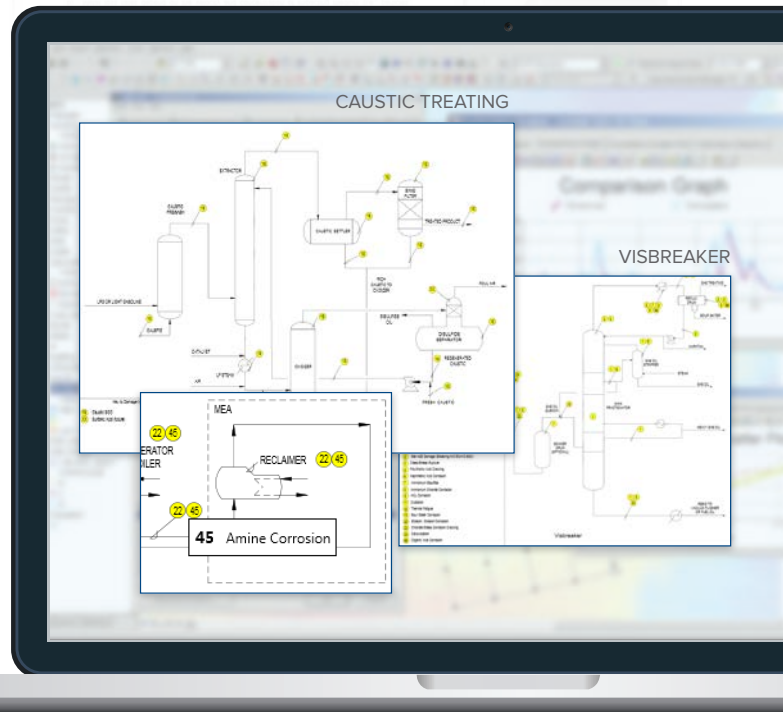
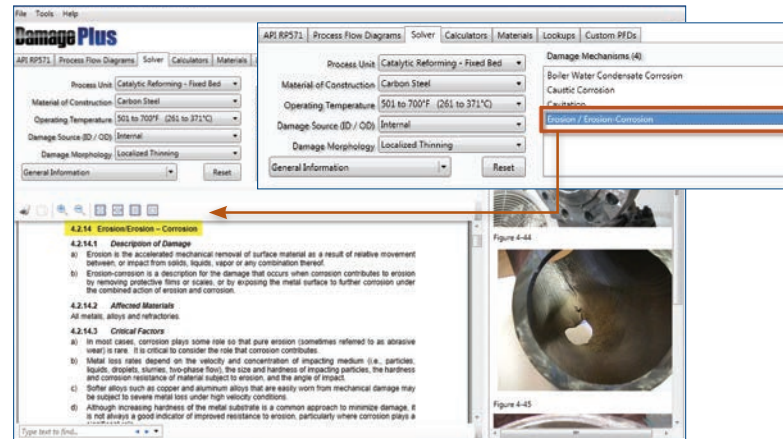
- » Aqueous Organic Acid Corrosion
- » Ethanol Stress Corrosion Cracking (SCC)
- » Gaseous Oxygen-Enhanced Ignition and Combustion
- » Sulfate SCC

## PROCESS FLOW DIAGRAMS

- » Hyperlink from Damage Mechanism section in API document
- » Caustic Treating and Visbreaker diagrams

## MATERIALS

- » Updated unit conversions
- » Improved steam table with interactive graph plot



API RP571   Process Flow Diagrams   Solver   Calculators   <b>Materials</b>   Lookups   Custom PFDs						
Chemistry   Specifications   Hardness   Fired Heater Limits   Weld Metals   Pump Materials						
Nominal Composition of Commonly Used Alloys						
Spec. or Material	Grade/Type	UNS	Product Form	UNS	%C	%Mn
B333	Hastelloy B	N10001	Plate		0.05	1

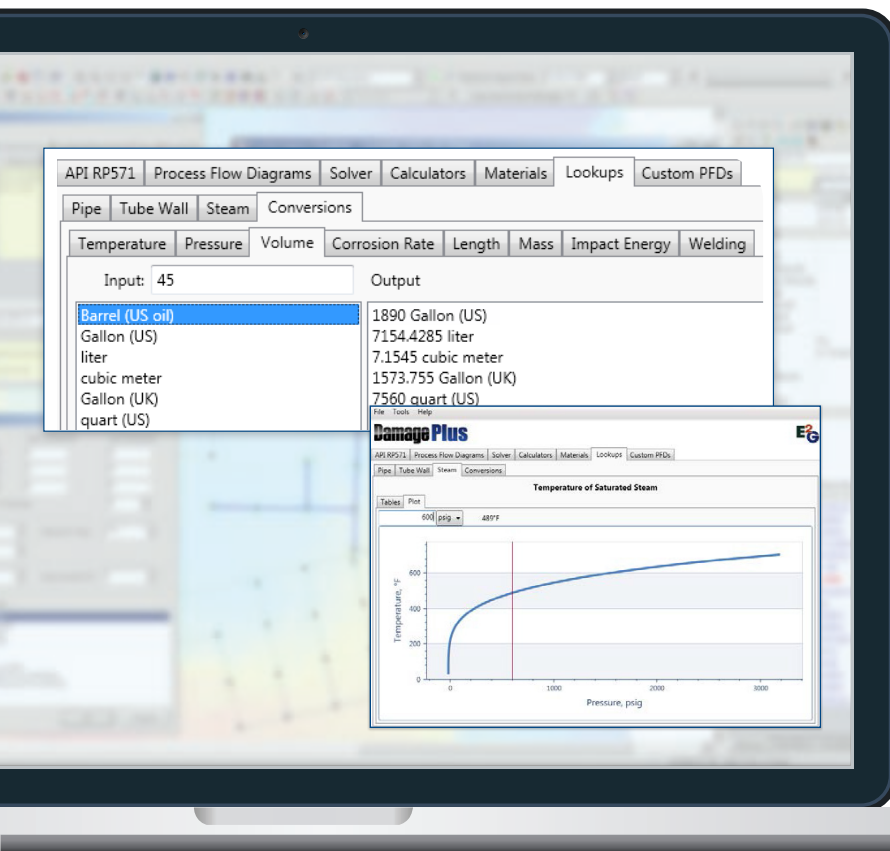
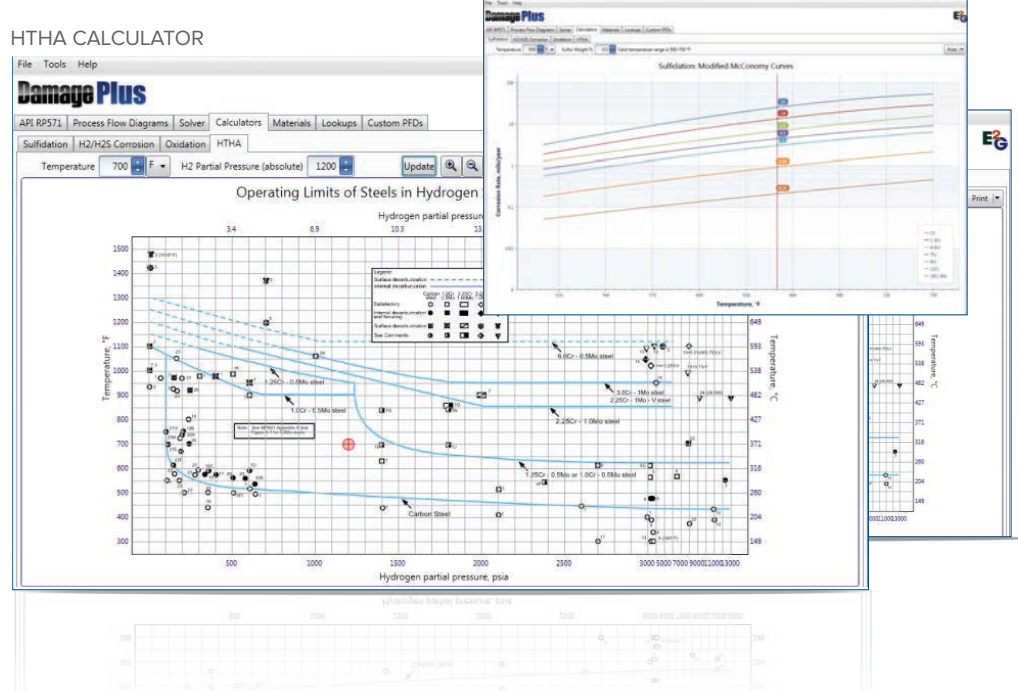
SMARTTECHNOLOGY.

## CALCULATORS

Plot corrosion rates for seven different materials based on Sulfidation,  $H_2/H_{2S}$ , Oxidation, and HTHA

- » Enhanced graphics for smooth curve plots
- » Interactive sliding controls
- » Real-time display updates
- » Improved printing capabilities

### HTHA CALCULATOR



## LOOKUPS

- » Updated unit conversions
- » Improved steam table with interactive graph plot

SMART TECHNOLOGY. ANSWERS FOR TODAY. INSIGHTS FOR TOMORROW.

#### CORPORATE HEADQUARTERS

20600 Chagrin Boulevard, Suite 1200  
Shaker Heights, OH 44122

#### SATELLITE OFFICES

Houston, TX  
The Woodlands, TX

#### CONTACT

216.283.9519  
Software@E2G.com  
www.E2G.com

