



THE POWER OF PlantManager™

PlantManager™ gives you the power to accomplish total life cycle management for fixed equipment by functioning as a platform for E²G's modular software tools, API RBI, SnapIMS™, SagePlus™, and CMLWise™.

DESIGN GEOMETRY MATERIAL DATA

API RBI

Quantitative tool that provides metrics and probability-of-failure calculations due to ongoing damage. Risk-based inspections are recommended based on probability and consequence.

SnapIMS™

Creates and manages a full spectrum of inspection activity throughout the equipment lifecycle

- » Schedule
- » Plan
- » Inspection Results

SagePlus™

Offers advanced analysis tools for the following:

- » Fitness-For-Service
- » Equipment Design Code
- » Material Tools
- » Fluid and Heat Transfer
- » Specialty In-Service Evaluation
- » Safety
- » Stress Analysis

CMLWise™

Thickness Management System for corrosion rate calculation. In addition to standard rate estimators, CMLWise™ offers the WISE method for rate calculation, blending expert opinion with actual field data.

PlantManager™ ALLOWS YOU TO ANSWER TO FOUR Ws

WHAT

ACTIONS DO I NEED TO TAKE?

WHY

IS ACTION NECESSARY?

WHERE

DO I NEED TO LOOK?

WHEN

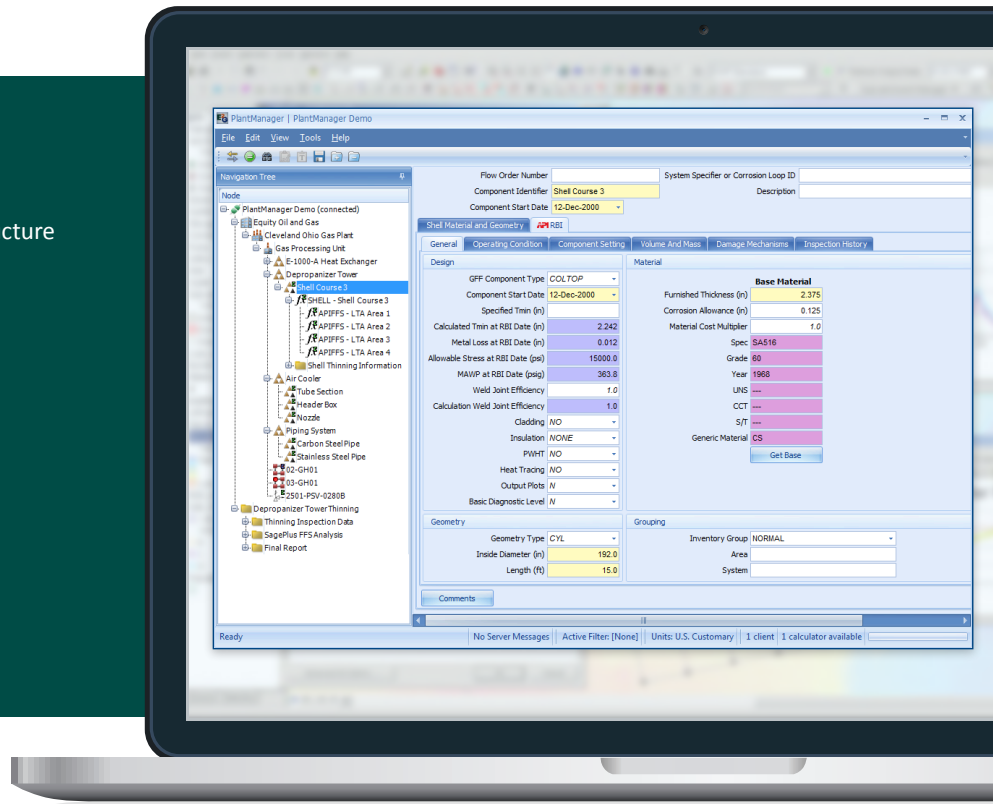
DO I NEED TO TAKE ACTION?

E²G software incorporates the latest technology for risk assessments. The flexible PlantManager™ environment works with a series of modular tools, allowing you to evaluate a variety of mitigation strategies and make well-informed decisions based on solid industry best practices.

SMART TECHNOLOGY.

ENVIRONMENT

- » Organize data in RBI equipment tree or folder structure
- » Store collateral documentation
- » Use local or network database connections
- » Connect to multiple databases simultaneously
- » Add comments to any keyword
- » Flag fields as Assumptions, Needs Review, etc.
- » Utilize visual cues
 - Color-coded data fields
 - Missing required data icon
 - Flagged data icon
 - Italicized default values
 - Comments highlighted
- » Add cases ("what if" scenarios)



UNDER THE HOOD



BUSINESS RULES ENGINE

Database-driven rather than embedded in the software, giving user-experts the power to make the rules



ARCHITECTURE

New four-tier architecture allows separation of calculators from server application and database



SIMULTANEOUS CALCULATIONS

Calculations can now be performed for multiple connections/users at the same time



BUNDLE DATA

Bundle Data is much more accurate due to enhanced empirical database for heat exchanger tube bundles



API AVAILABLE FOR THIRD-PARTY PLUGINS

- » CREDO
- » SAP
- » Meridium
- » Maximo

SMART TECHNOLOGY. ANSWERS FOR TODAY. INSIGHTS FOR TOMORROW.

CORPORATE HEADQUARTERS

20600 Chagrin Boulevard, Suite 1200
Shaker Heights, OH 44122

SATELLITE OFFICES

Houston, TX
The Woodlands, TX
Alberta, Canada

CONTACT

216.283.9519
www.E2G.com

