



# THE POWER OF PlantManager™

PlantManager™ gives you the power to accomplish total life cycle management for fixed equipment by functioning as a platform for E<sup>2</sup>G's modular software tools, API RBI, SnapIMS™, SagePlus™, and CMLWise™.

## DESIGN GEOMETRY MATERIAL DATA

### API RBI

Quantitative tool that provides metrics and probability-of-failure calculations due to ongoing damage. Risk-based inspections are recommended based on probability and consequence.

### SagePlus™

Offers advanced analysis tools for the following:

- » Fitness-For-Service
- » Equipment Design Code
- » Material Tools
- » Fluid and Heat Transfer
- » Specialty In-Service Evaluation
- » Safety
- » Stress Analysis

## PlantManager™ ALLOWS YOU TO ANSWER TO FOUR Ws

### WHAT

ACTIONS DO I NEED TO TAKE?

### WHY

IS ACTION NECESSARY?

### WHERE

DO I NEED TO LOOK?

### WHEN

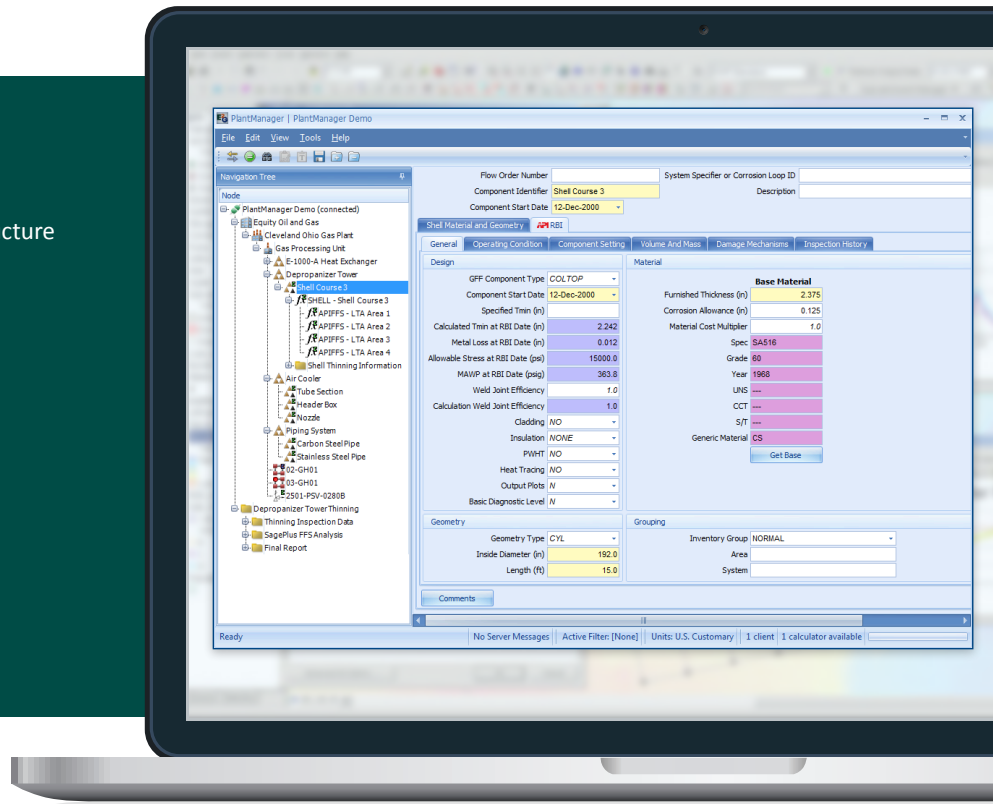
DO I NEED TO TAKE ACTION?

E<sup>2</sup>G software incorporates the latest technology for risk assessments. The flexible PlantManager™ environment works with a series of modular tools, allowing you to evaluate a variety of mitigation strategies and make well-informed decisions based on solid industry best practices.

SMARTTECHNOLOGY.

## ENVIRONMENT

- » Organize data in RBI equipment tree or folder structure
- » Store collateral documentation
- » Use local or network database connections
- » Connect to multiple databases simultaneously
- » Add comments to any keyword
- » Flag fields as Assumptions, Needs Review, etc.
- » Utilize visual cues
  - Color-coded data fields
  - Missing required data icon
  - Flagged data icon
  - Italicized default values
  - Comments highlighted
- » Add cases ("what if" scenarios)



## UNDER THE HOOD



### BUSINESS RULES ENGINE

Database-driven rather than embedded in the software, giving user-experts the power to make the rules



### ARCHITECTURE

New four-tier architecture allows separation of calculators from server application and database



### SIMULTANEOUS CALCULATIONS

Calculations can now be performed for multiple connections/users at the same time



### BUNDLE DATA

Bundle Data is much more accurate due to enhanced empirical database for heat exchanger tube bundles



### API AVAILABLE FOR THIRD-PARTY PLUGINS

- » CREDO
- » SAP
- » Meridium
- » Maximo

**SMART TECHNOLOGY. ANSWERS FOR TODAY. INSIGHTS FOR TOMORROW.**

#### CORPORATE HEADQUARTERS

20600 Chagrin Boulevard, Suite 1200  
Shaker Heights, OH 44122

#### SATELLITE OFFICES

Houston, TX  
The Woodlands, TX

#### CONTACT

216.283.9519  
Software@E2G.com  
www.E2G.com

